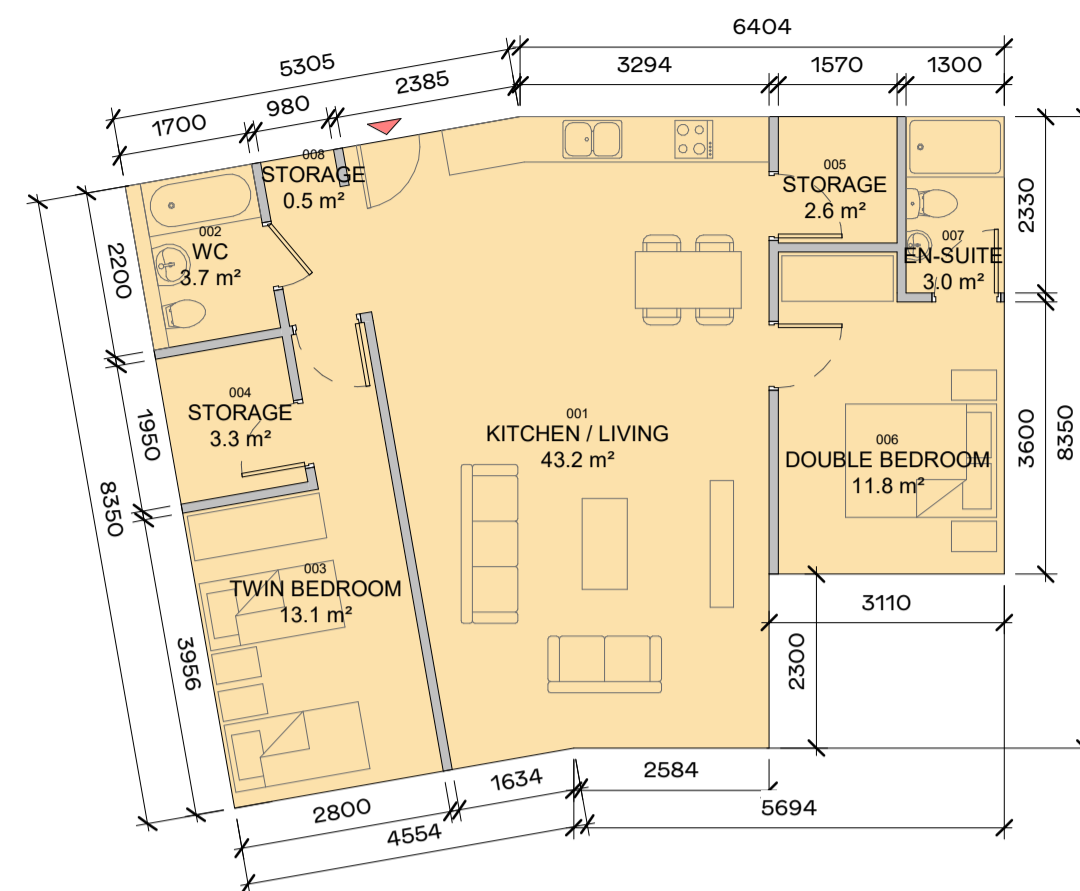


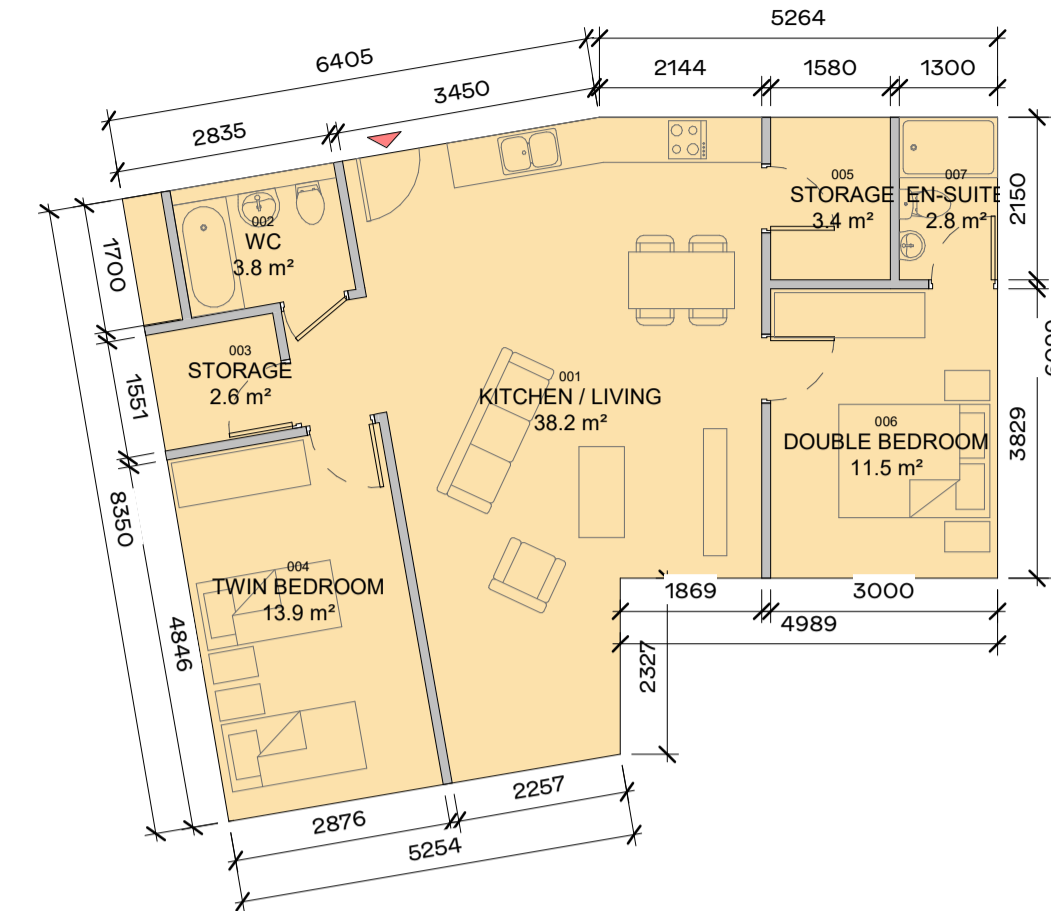
APARTMENT TYPE - 2B-1A		
NO.	NAME	AREA
001	KITCHEN / LIVING	32.5 m ²
002	WC	3.7 m ²
003	TWIN BEDROOM	13.1 m ²
004	STORAGE	3.3 m ²
005	STORAGE	3.7 m ²
006	DOUBLE BEDROOM	12.1 m ²
007	EN-SUITE	2.7 m ²
APARTMENT TOTAL AREA		74.3 m²

1 APARTMENT TYPE - 2B-1A
1:100



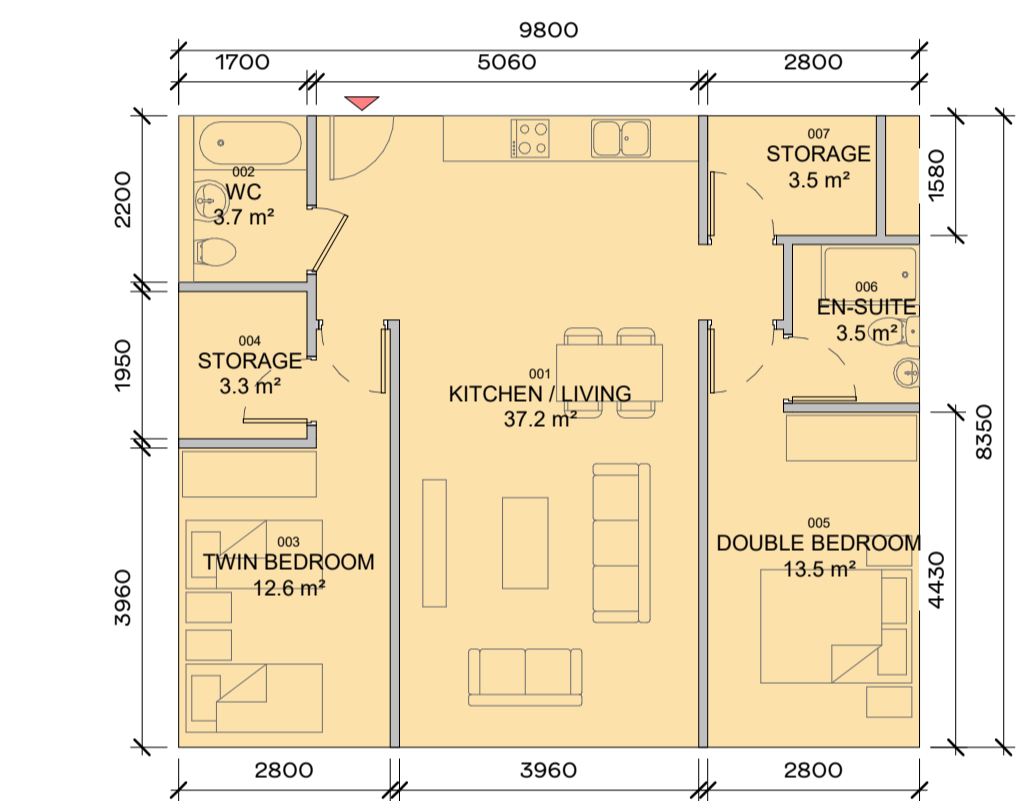
APARTMENT TYPE - 2B-1B		
NO.	NAME	AREA
001	KITCHEN / LIVING	43.2 m ²
002	WC	3.7 m ²
003	TWIN BEDROOM	13.1 m ²
004	STORAGE	3.3 m ²
005	STORAGE	2.6 m ²
006	DOUBLE BEDROOM	11.8 m ²
007	EN-SUITE	3.0 m ²
008	STORAGE	0.5 m ²
APARTMENT TOTAL AREA		84.5 m²

2 APARTMENT TYPE - 2B-1B
1:100



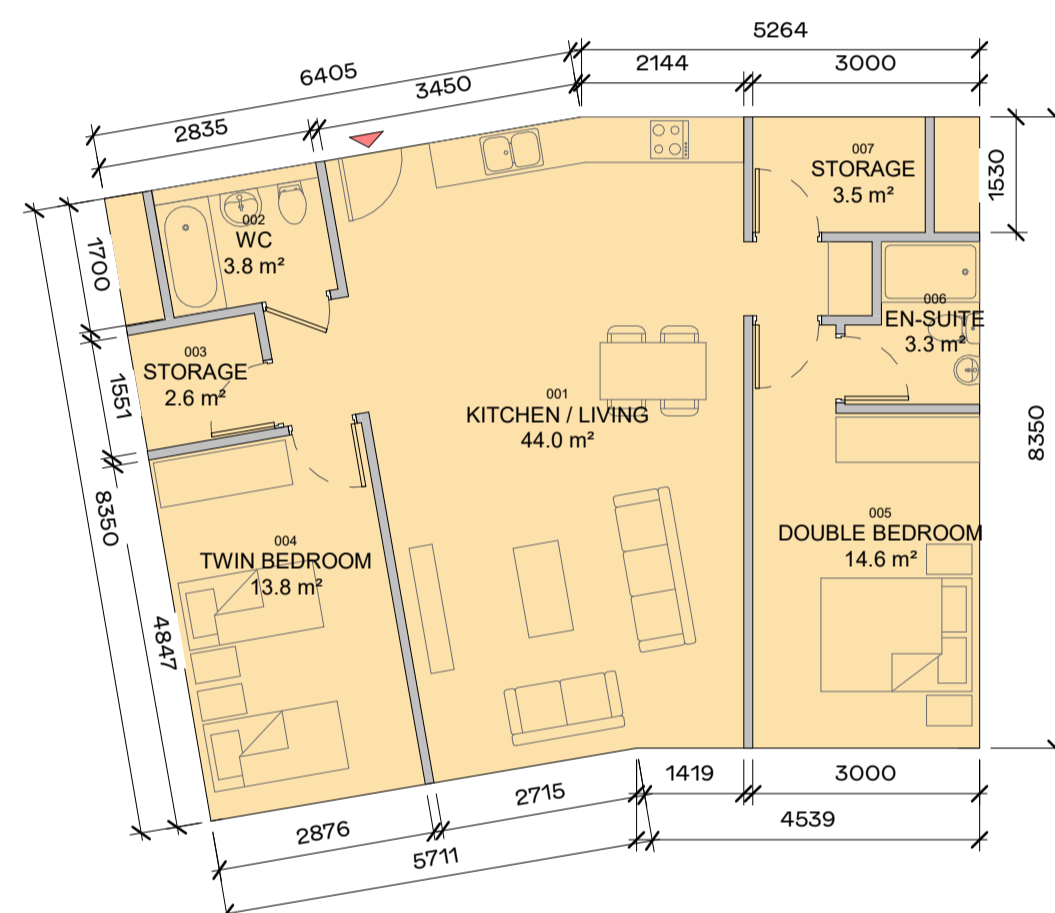
APARTMENT TYPE - 2B-1C		
NO.	NAME	AREA
001	KITCHEN / LIVING	38.2 m ²
002	WC	3.8 m ²
003	STORAGE	2.6 m ²
004	TWIN BEDROOM	13.9 m ²
005	STORAGE	3.4 m ²
006	DOUBLE BEDROOM	11.5 m ²
007	EN-SUITE	2.8 m ²
APARTMENT TOTAL AREA		80.4 m²

3 APARTMENT TYPE - 2B-1C
1:100



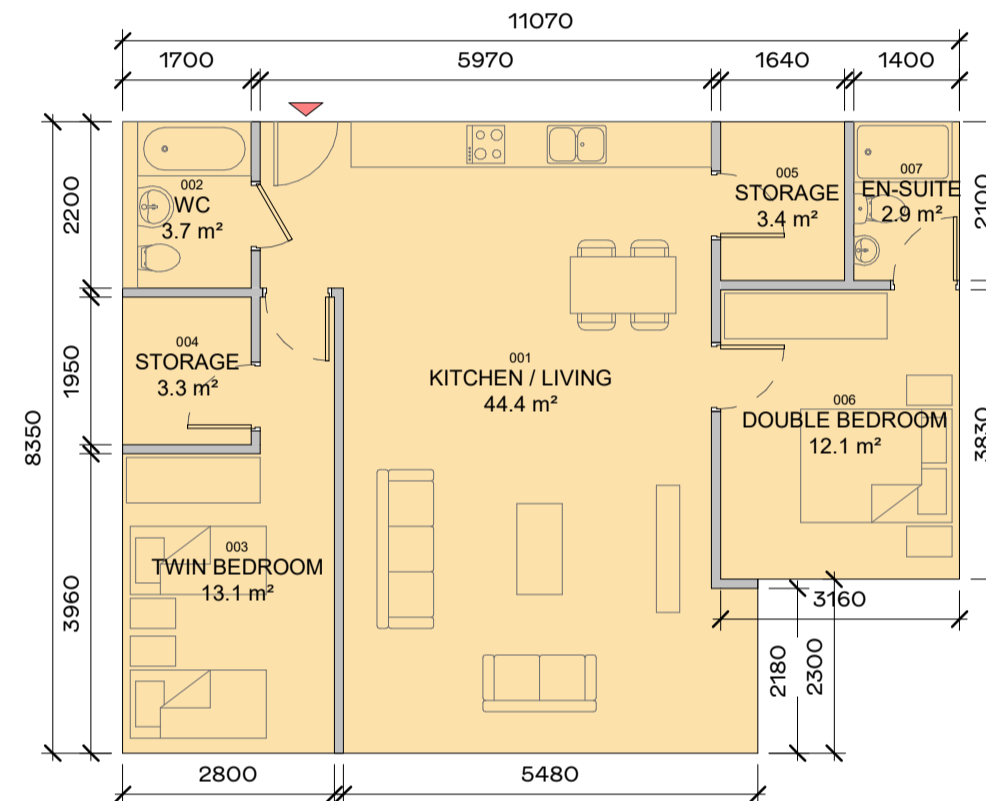
APARTMENT TYPE - 2B-1D		
NO.	NAME	AREA
001	KITCHEN / LIVING	37.2 m ²
002	WC	3.7 m ²
003	TWIN BEDROOM	12.6 m ²
004	STORAGE	3.3 m ²
005	DOUBLE BEDROOM	13.5 m ²
006	EN-SUITE	3.5 m ²
007	STORAGE	3.5 m ²
APARTMENT TOTAL AREA		81.8 m²

4 APARTMENT TYPE - 2B-1D
1:100



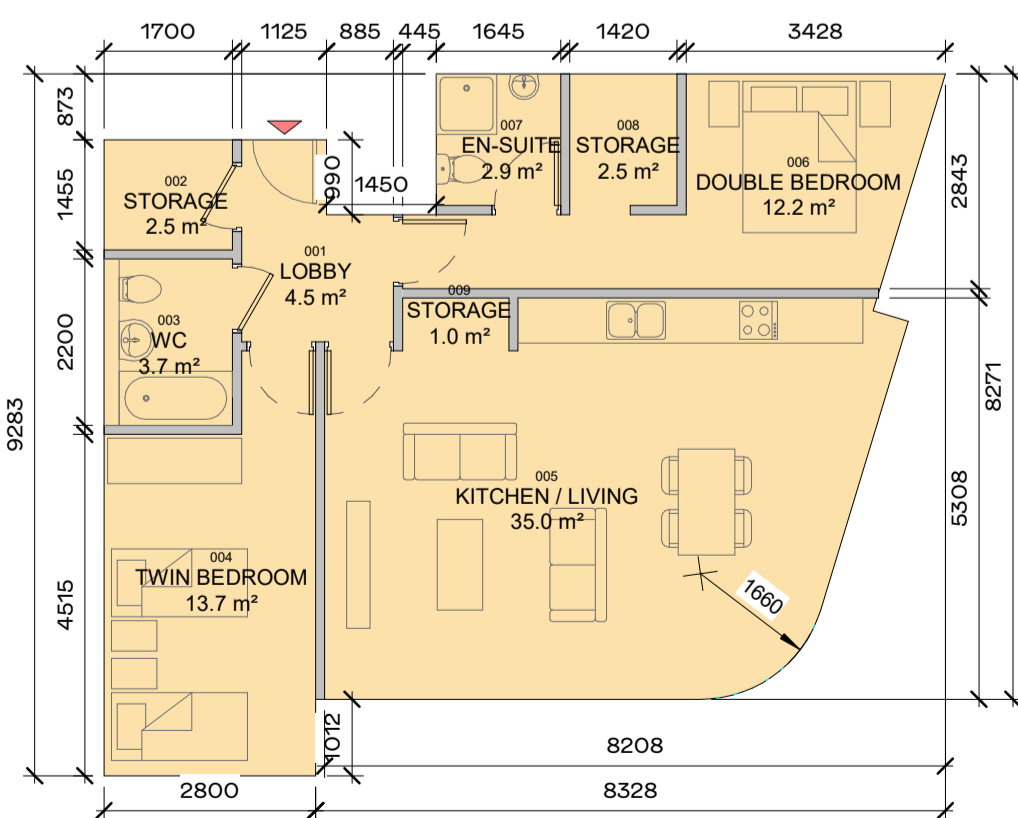
APARTMENT TYPE - 2B-1E		
NO.	NAME	AREA
001	KITCHEN / LIVING	44.0 m ²
002	WC	3.8 m ²
003	STORAGE	2.6 m ²
004	TWIN BEDROOM	13.8 m ²
005	DOUBLE BEDROOM	14.6 m ²
006	EN-SUITE	3.3 m ²
007	STORAGE	3.5 m ²
APARTMENT TOTAL AREA		91.5 m²

5 APARTMENT TYPE - 2B-1E
1:100



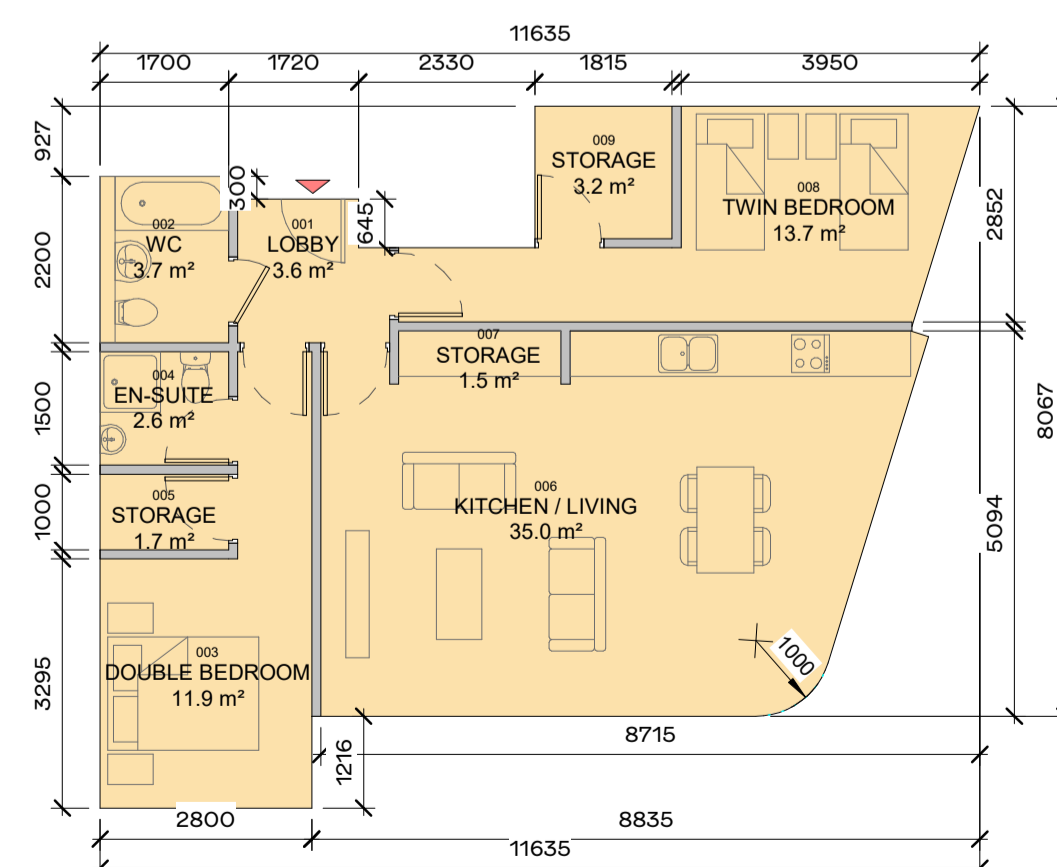
APARTMENT TYPE - 2B-1F		
NO.	NAME	AREA
001	KITCHEN / LIVING	44.4 m ²
002	WC	3.7 m ²
003	TWIN BEDROOM	13.1 m ²
004	STORAGE	3.3 m ²
005	STORAGE	3.4 m ²
006	DOUBLE BEDROOM	12.1 m ²
007	EN-SUITE	2.9 m ²
APARTMENT TOTAL AREA		86.3 m²

6 APARTMENT TYPE - 2B-1F
1:100



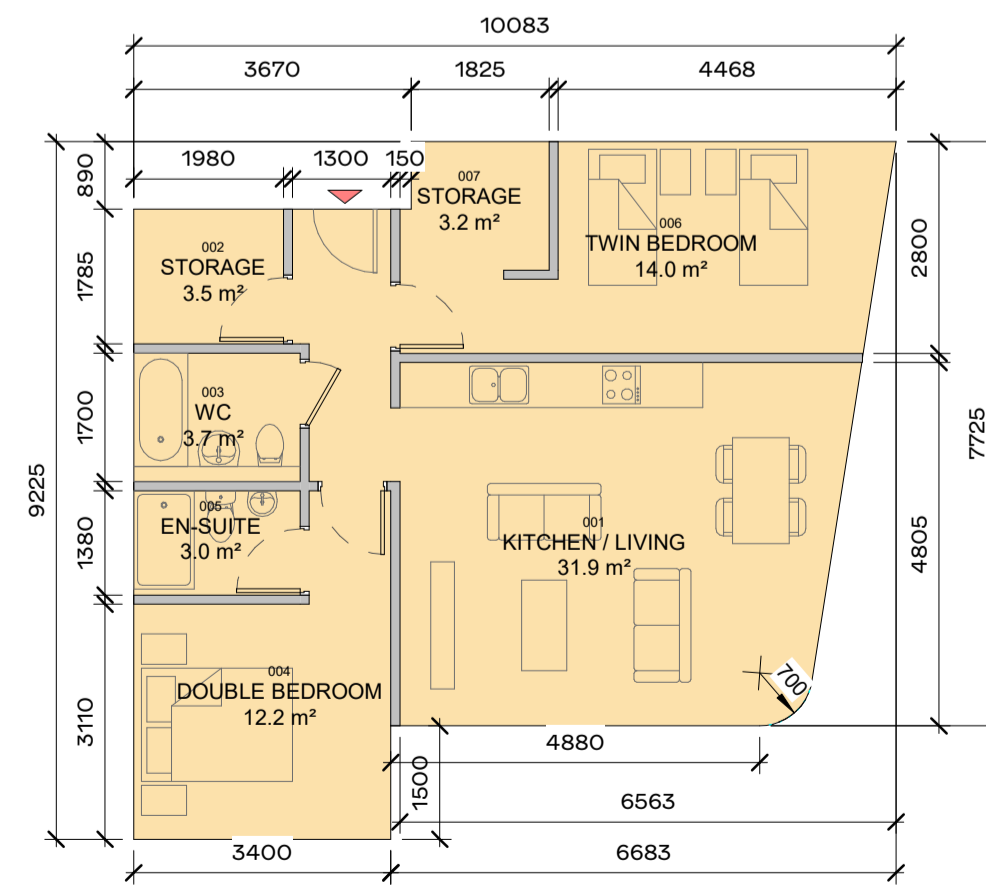
APARTMENT TYPE - 2B-3A		
NO.	NAME	AREA
001	LOBBY	4.5 m ²
002	STORAGE	2.5 m ²
003	WC	3.7 m ²
004	TWIN BEDROOM	13.7 m ²
005	KITCHEN / LIVING	35.0 m ²
006	DOUBLE BEDROOM	12.2 m ²
007	EN-SUITE	2.9 m ²
008	STORAGE	2.5 m ²
009	STORAGE	1.0 m ²
APARTMENT TOTAL AREA		81.5 m²

7 APARTMENT TYPE - 2B-3A
1:100



APARTMENT TYPE - 2B-3B		
NO.	NAME	AREA
001	LOBBY	3.6 m ²
002	WC	3.7 m ²
003	DOUBLE BEDROOM	11.9 m ²
004	EN-SUITE	2.6 m ²
005	STORAGE	1.7 m ²
006	KITCHEN / LIVING	35.0 m ²
007	STORAGE	1.5 m ²
008	TWIN BEDROOM	13.7 m ²
009	STORAGE	3.2 m ²
APARTMENT TOTAL AREA		80.4 m²

8 APARTMENT TYPE - 2B-3B
1:100



APARTMENT TYPE - 2B-3C		
NO.	NAME	AREA
001	KITCHEN / LIVING	31.9 m ²
002	STORAGE	3.5 m ²
003	WC	3.7 m ²
004	DOUBLE BEDROOM	12.2 m ²
005	EN-SUITE	3.0 m ²
006	TWIN BEDROOM	14.0 m ²
007	STORAGE	3.2 m ²
APARTMENT TOTAL AREA		75.0 m²

9 APARTMENT TYPE - 2B-3C
1:100

SITE DRAWINGS LEGEND:

REFER TO BARRET MAHONY CIVIL ENGINEERING DRAWINGS FOR ALL DRAINAGE/ ROAD INFORMATION.

SURVEY INFORMATION PROVIDED BY JONES ENGINEERING ON 23.4.2019.

PLEASE REFER TO THE PAUL HOGARTH COMPANY LANDSCAPE DRAWINGS FOR ALL INFORMATION ON EXISTING AND PROPOSED TREES, MATERIAL FINISHES AND LAYOUT. ANY REFERENCE TO TREES/ HARD OR SOFT LANDSCAPING IN THIS DRAWING ARE INDICATIVE ONLY.

ALL APARTMENT TYPES SHOULD BE READ IN CONJUNCTION WITH DRAWING NO.S P1601, P1602, P1603, P1604 AND HOUSING QUALITY

P2	26/11/2019	ISSUED FOR PLANNING APPROVAL	DB	OJ
P1	05/08/2019	ISSUED FOR PAC REQUEST	DB	OJ
REV	DATE	DESCRIPTION	CHK	DRN

STATUS CODE DESCRIPTION

ISSUED FOR PLANNING APPROVAL

CLIENT

Atlas GP Limited

PROJECT

Project Claremont

DRAWING

APARTMENT TYPES
SHEET 2 OF 4

PROJECT NUMBER	DATE
950520	26/11/19
SCALE@ A1:	DRAWN/CHECKED:
1: 100	OJ/ DB

REVISION	DRAWING NUMBER	STATUS CODE:
P2	CLR-HJL-XX-XX-DR-A-1602	A1

Henry J Lyons

Architecture + Interiors
henryjlyons.com

+353 1 888 3333
info@henryjlyons.com

53.54 Pease Street
Dublin D02 K666